

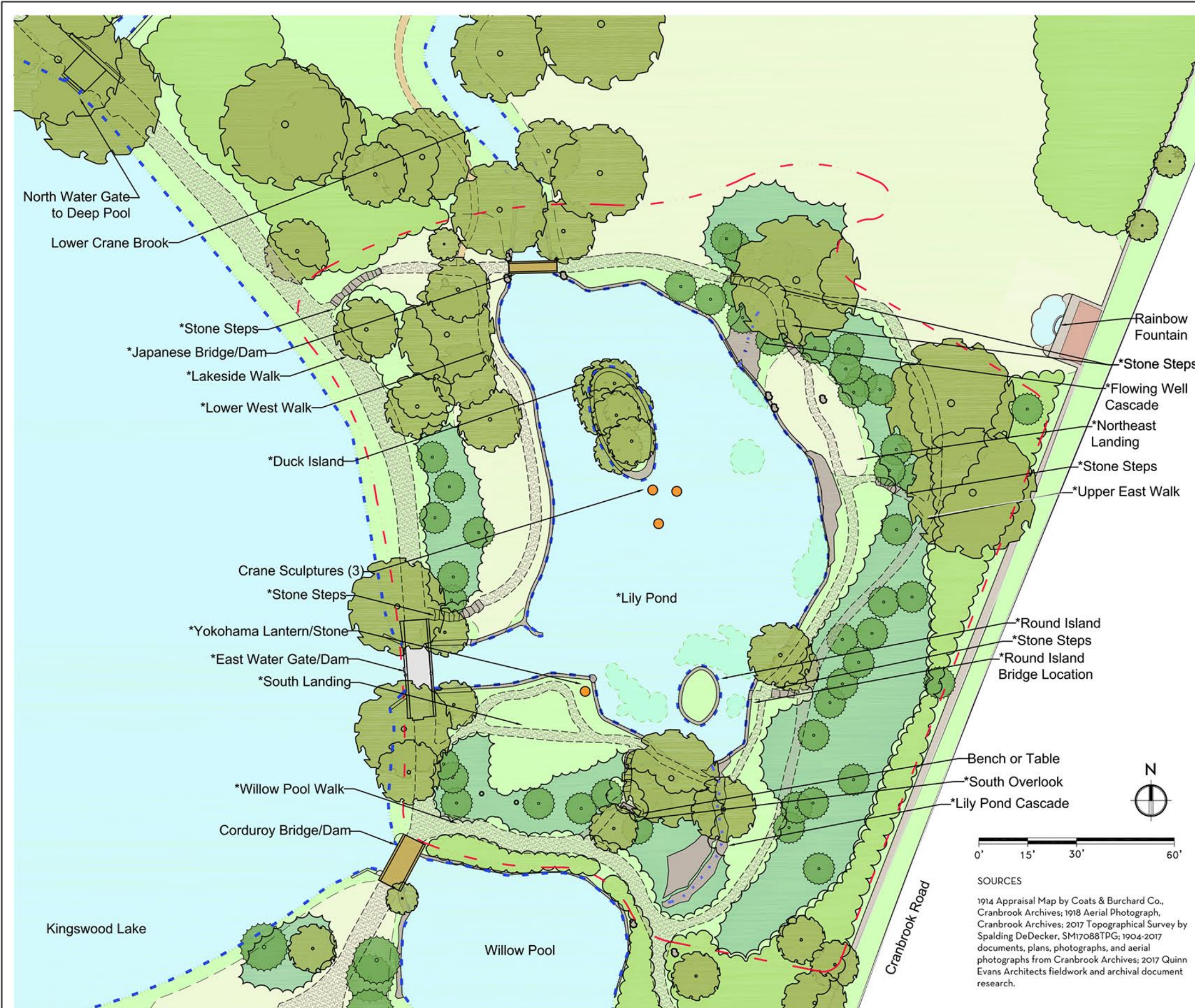
Cranbrook Japanese Garden Historic Landscape Study

Client:
Cranbrook Center for
Collections and Research
39221 Woodward Avenue
Bloomfield Hills, MI 48303
www.center.cranbrook.edu

Landscape Architect:
Quinn Evans Architects
219 1/2 N Main St.
Ann Arbor, MI 48104
Ph. 734-663-5888
www.quinnevans.com

SYMBOL KEY

-  Deciduous Tree
-  Evergreen Tree
-  Ornamental Tree
-  Evergreen Tree Mass
-  Woodland Edge
-  Groundcover/Shrub
-  Aquatic Plant
-  Turf
-  Mulch/Soil
-  Water Feature
-  Cascade
-  Stone Steps
-  Concrete
-  Gravel
-  Brick/Tile
-  Stone Monolith
-  Stone Wall/Edge
-  Iron Rail
-  Bridge
-  Bench
-  Sculpture/Lantern
-  Japanese Garden Boundary
-  Japanese Garden Feature Extant 2018



SOURCES
1914 Appraisal Map by Coats & Burchard Co.,
Cranbrook Archives; 1918 Aerial Photograph,
Cranbrook Archives; 2017 Topographical Survey by
Spalding DeDecker, SM17088TPG; 1904-2017
documents, plans, photographs, and aerial
photographs from Cranbrook Archives; 2017 Quinn
Evans Architects fieldwork and archival document
research.

Title:
1928 Period Plan

Date:
January 2018

Drawing Number:
PP 1928